



Weekly Construction Progress Report

Morningside Elementary School

Week Ending: 11/12/2021

THIS WEEK

- Fire line installation beginning through site
- Mechanical equipment relocation continues
- Mechanical, electrical and plumbing rough-in continues throughout building
- Low voltage rough-in continuing
- Sheetrock continues throughout building
- Sheetrock finishing continues throughout building
- Fire sprinkler installation continues
- Batt insulation installation continues
- Lighting installation continues
- Ceiling grid installation continues
- Hard ceiling installation begins
- Interior painting begins at Area A
- Floor prep begins at Area A
- New addition slab on grade completed
- CMU installation at cafeteria addition
- Exterior metal stud installation at cafeteria addition

NEXT WEEK: 11.15.21 – 11.19.21

- Fire line installation continuing
- Mechanical equipment relocation continues
- Mechanical and electrical continues throughout building
- Low voltage rough-in continues
- Sheetrock continues throughout building
- Sheetrock finishing continues throughout building
- Fire sprinkler installation continues
- Lighting installation continues
- Ceiling grid installation continues
- Hard ceiling installation continues
- Interior painting begins at Area A
- Cafeteria CMU completed
- Waterproofing CMU beginning
- Exterior cafeteria studs and sheathing continuing.

BUDGET/SCHEDULE

Construction Budget

\$17,600,000.00

Budget Status

\$5,851,249.24

Substantial Completion:

July 25, 2022

Schedule Status:

On Schedule

Completed By:

Chris Hubbard

PARRISH
CONSTRUCTION GROUP

Photo/Activity Updates

New addition slab on grade



New addition slab on grade



Photo/Activity Updates

Cafeteria CMU



Exterior metal studs at cafeteria



Photo/Activity Updates

Restroom hard ceiling install

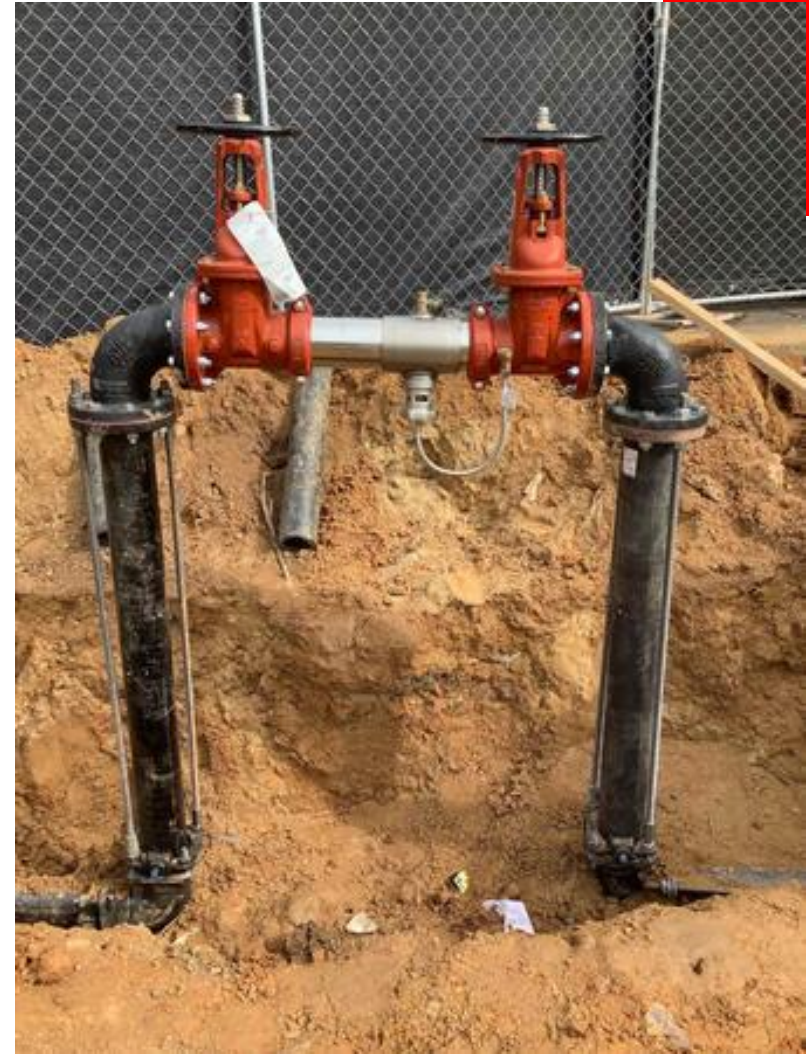


Electrical conduit install



Photo/Activity Updates

Garage exhaust duct install



Water line backflow install

